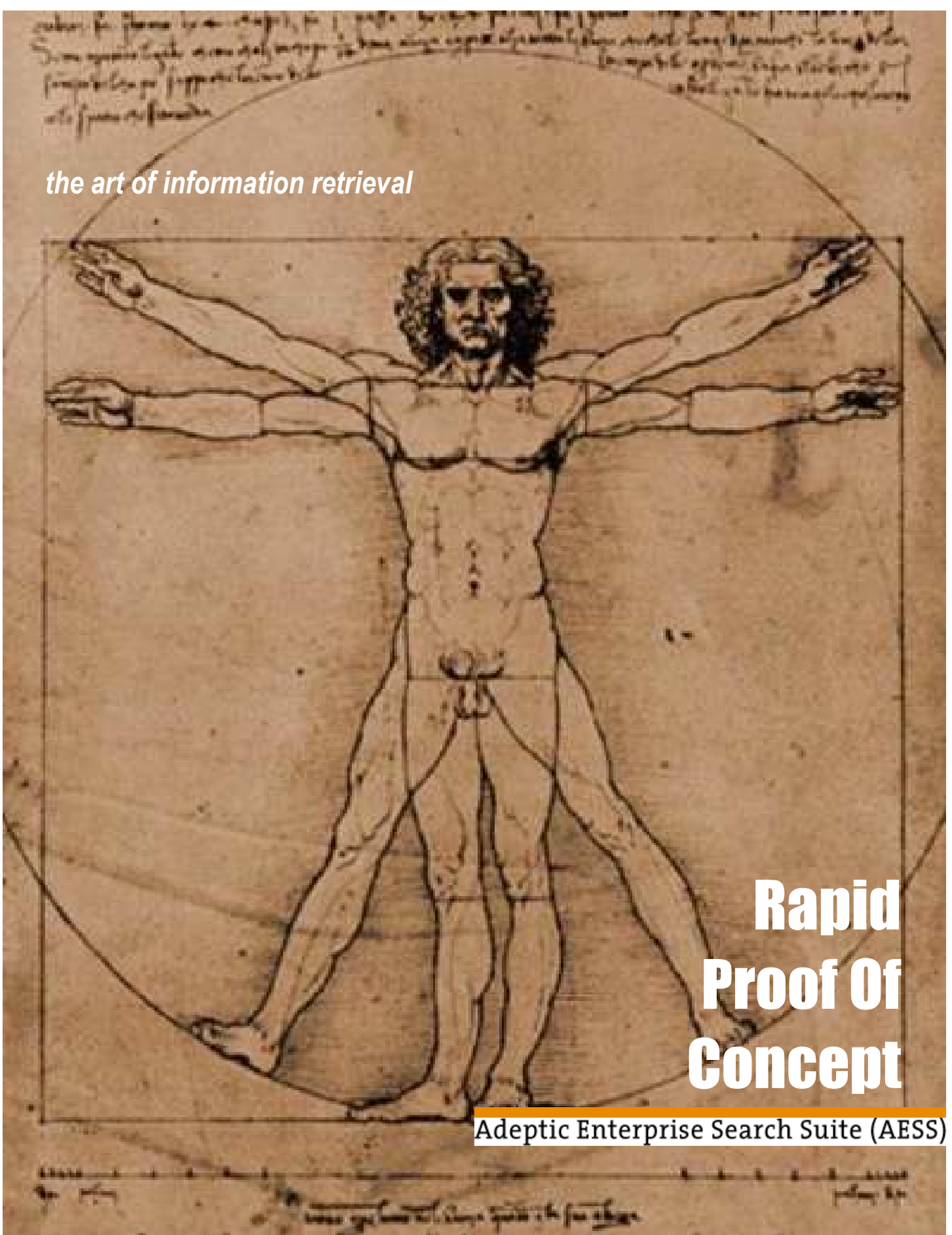


*the art of information retrieval*



# Rapid Proof Of Concept

Adeptic Enterprise Search Suite (AESS)



## Preface

In an ever competitive market, often irritated by numerous and lengthy interruptions in their daily business activities, organizations are extremely reluctant in exploring horizon of new technologies.

While exploring more sophisticated and/or newer technologies, it will be ideal should there exist an environment, where not only the day-to-day activities of an organization are not interrupted but also to leave its competition behind the organization has the opportunity of rapidly exploring a new product/system on a trial basis and in parallel to its existing system, test driving the new phenomenon utilizing its own internal information, and comparing its functionality in action with its existing one.

To address common concern in exploring new technologies and in introducing its revolutionary “**Hit; and Never Miss**” intranet/internet based **Adeptic Enterprise Search Suite** search engine, **Adeptic Technologies AB** has developed an unprecedented and unique approach referred to as **Rapid Proof Of Concept (RPOC)**.

Consequently, without any interruption in daily business activities, an organization may take advantage of our **Rapid Proof Of Concept** business approach and embark on test driving the revolutionary **Adeptic Enterprise Search Suite** search engine:

**Rapid:** Depending the volume of information being tested on, the Adeptic Enterprise Search Suite trial package may be prepared for technical review in matter of couple of days.

**Concept:** Unlike others, not an alienated information package but the ones utilized by an organization in real-time business activities will be utilized to prepare the superior “**Hit; and Never Miss**” **Adeptic Enterprise Search Suite** trial package for technical review.

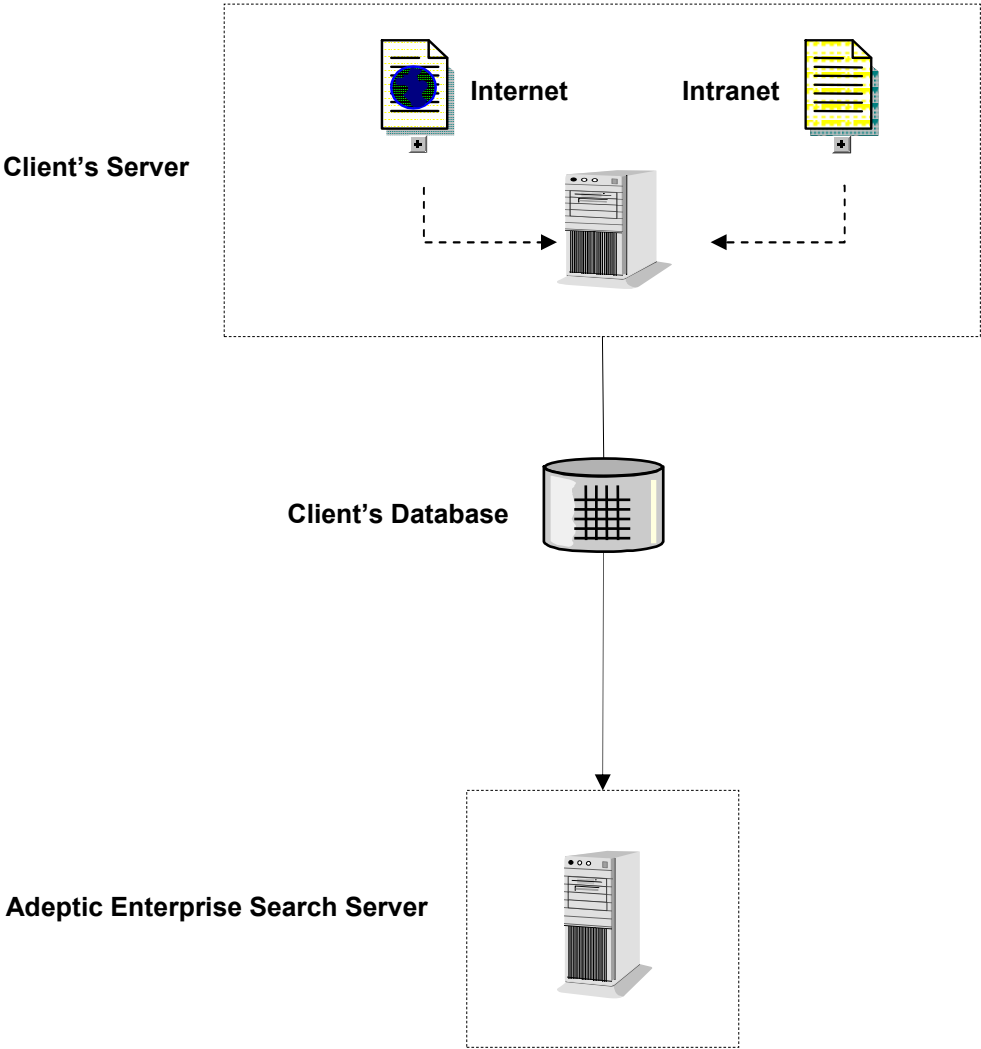
**Proof:** The superiority of **Adeptic Enterprise Search Suite** over the existing product utilized by an organization will be proven in action by allowing the organization to evaluate our product and most importantly compare its realistic results to the ones generated by its already adapted search engines.





# RPOC - Process

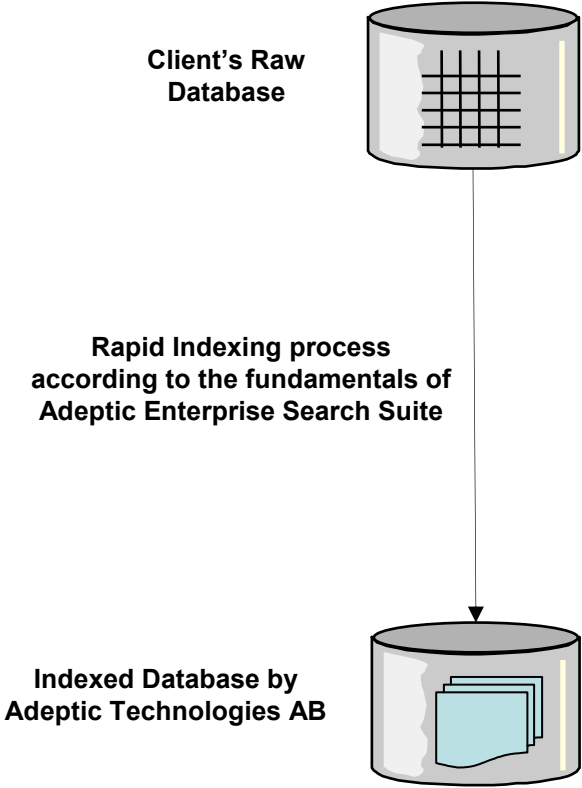
Database (information existed on client's server classified as web based **Internet** and/or internal **Intranet**) is copied to the **Adeptic Enterprise Search Server**.





# RPOC - Process

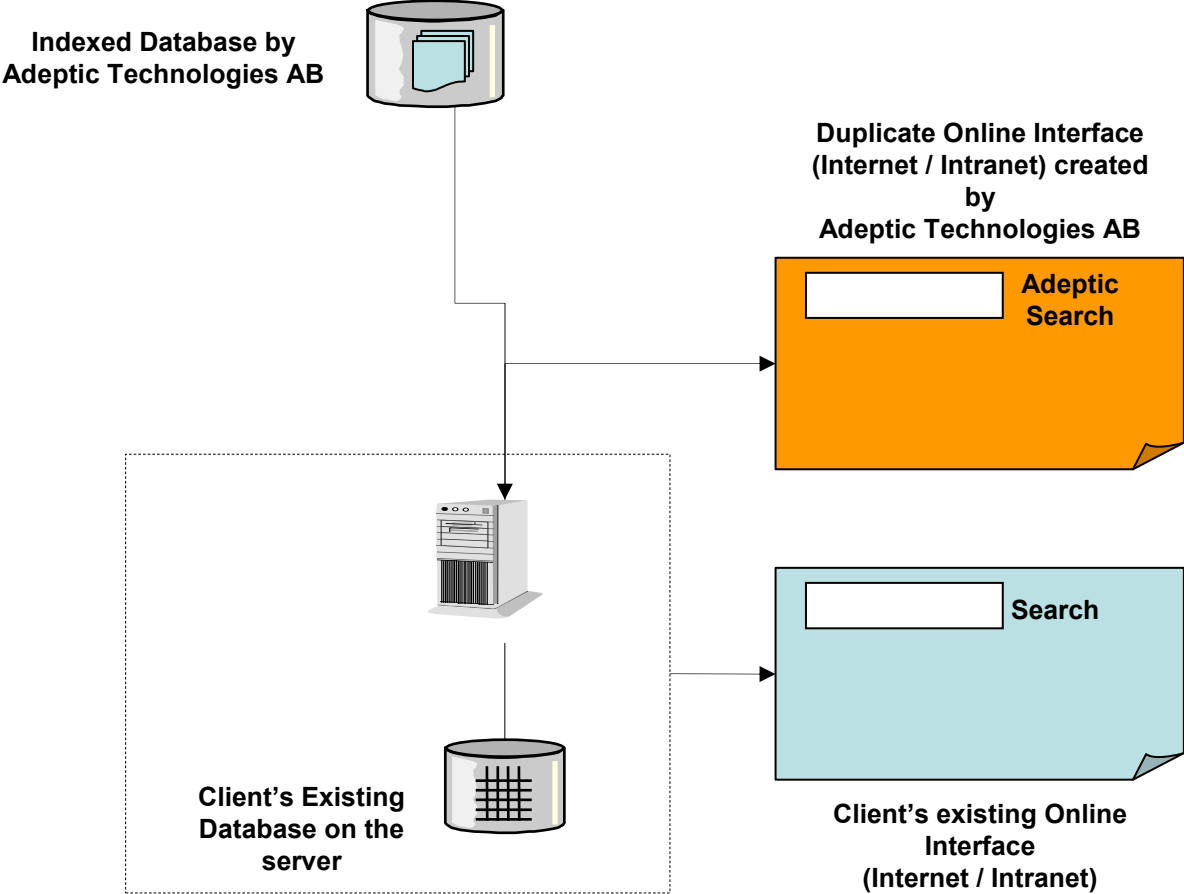
In **Adeptic Enterprise Search Server**, client's database is indexed rapidly according to the fundamentals of **Adeptic Enterprise Search Suite**:





# RPOC - Process

By bypassing client's system and its inherent interface, utilizing the indexed database, a duplicate interface will be created on client's server that allows the evaluator to compare both functionality and search results of **Adeptic Enterprise Search Suite** in action with client's existing search engine on its own server:



Rapid Proof Of Concept – All Rights Reserved. 2008





## Remarks

Although it may seem complicated at first, without any administrative efforts of Client's part, our existing clients, who adapted **Adeptic Enterprise Search Suite**, were furnished with a trial package for technical review in matter of couple of days. As a result, our existing clients were able to evaluate the superiority of **Adeptic Enterprise Search Suite** over their existing intranet / internet search engines utilizing their real-time information in almost no time.





To Reach Us



[www.adeptic.com](http://www.adeptic.com)



[contact@adeptic.com](mailto:contact@adeptic.com)

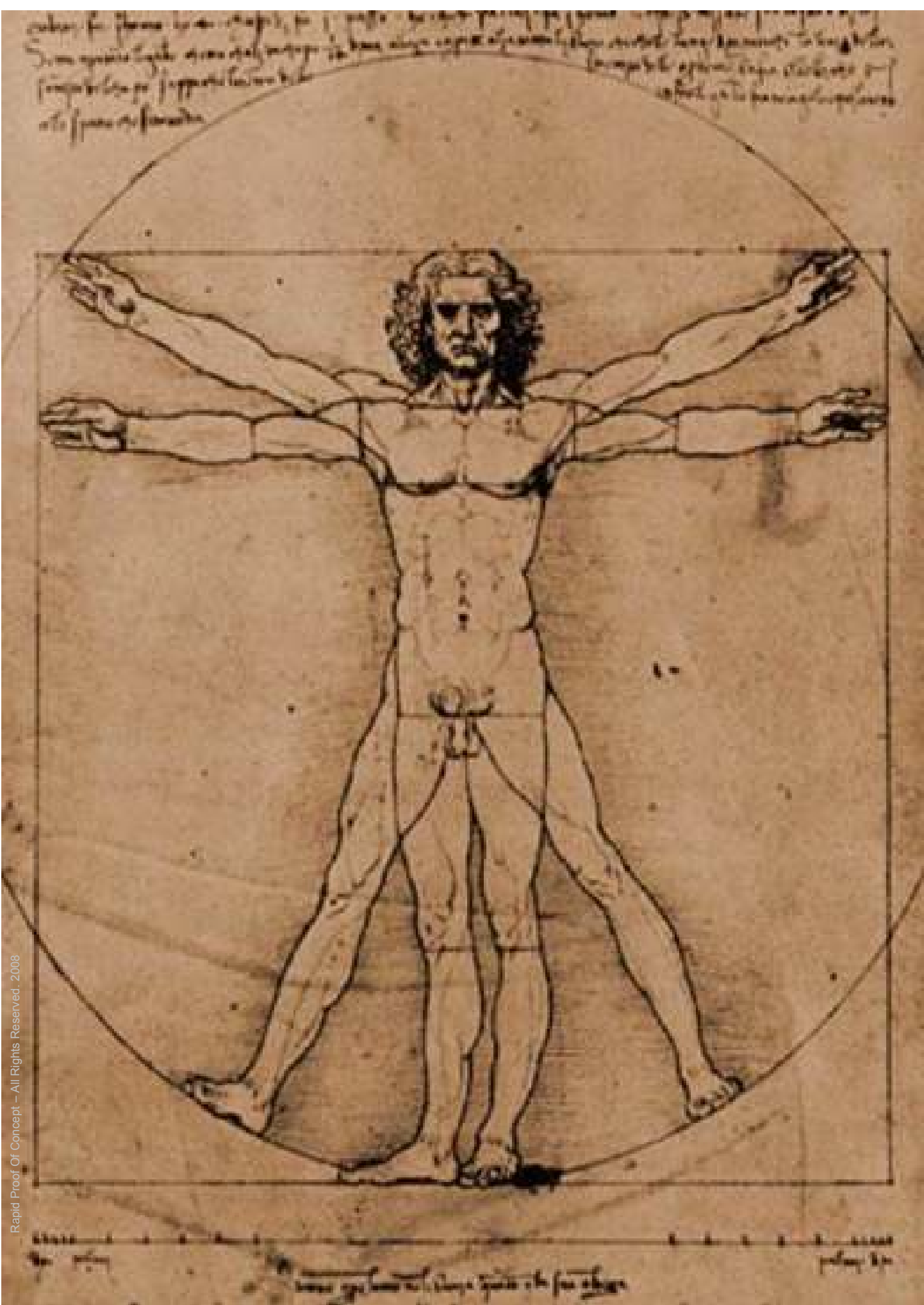


Adeptic Technologies AB  
Kungstensgatan 38  
113 59 Stockholm  
Sweden



Product Info: +46 735 088 327  
Sales: +46 735 338 279





Rapid Proof Of Concept - All Rights Reserved. 2008